

**WELCOME TO**

**Curriculum Night**

**WITH**

**Ms. Stanley**



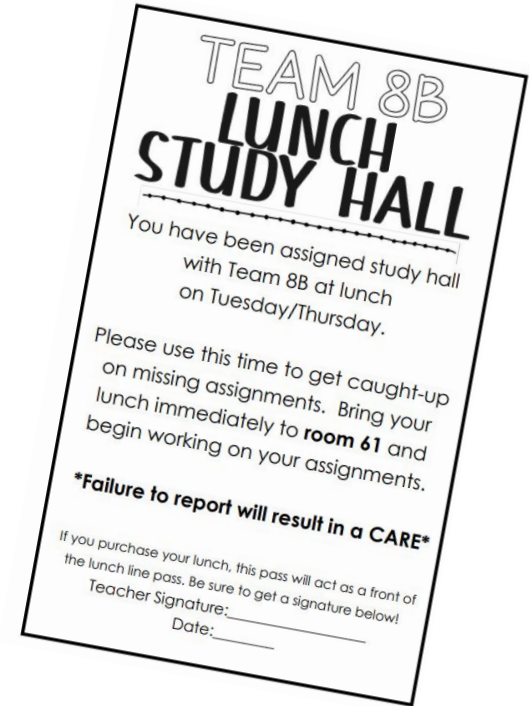
# Ms Stanley

- Grew Up In Sioux City, IA
- Graduated from Wayne State in NE and NAU
- 30<sup>th</sup> year teaching
- I have been at SJHS since it opened
- My son is a Senior at ASU/ATP
- I LOVE to be outside Paddleboarding and Kayaking



# TUTORING

- Wednesdays @ lunch
- Wednesday mornings 8:15
- Thursday mornings with Mrs. Ivanov (Math Interventionist)
- Homework Hub:  
Tuesday/Thursday after school  
in media center



# **“Student responsibility breeds SUCCESS!”**

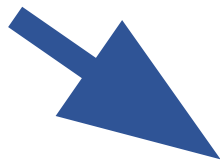
Making mistakes and problem-solving facilitates learning. We (parents AND teachers) are here to support and teach students along the way, but ultimately, they are responsible for their own academic success. We encourage students to self-advocate and speak up when they need help or clarification.

# INFINITE CAMPUS

- Please check grades on a regular basis
- We believe it is a very accurate way to communicate your child's progress

# ABSENT WORK

- Work is posted **DAILY** in **Google Classroom**
- It is another way to monitor your child's progress and check what they have for an assignment



## Q4 WEEK7



Statistics 5/12

Posted May 12



Statistics 5/11

Posted May 11



Statistics Day 1 5/10

Edited May 10



Review for QUIZ 5/8

Posted May 8



# Q3 WEEK5



Factoring out A review 2/10

Posted Feb 10



Intercept to Standard Form 2/8

Posted Feb 8



No due date

Upcoming Quiz 2/16

Due 2/10

Complete

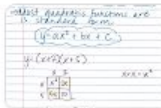
1. Notes with mine
2. Intercept to Standard Form Slides
3. Intercept to Standard Practice Do Evens and 11 & 12

0

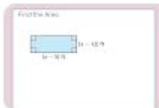
Turned in

35

Assigned



NOTES Intercept Form to...  
PDF



Day4 Intercept to Standa...  
Google Slides



Intercept to Standard For...  
Google Docs



Intercept Form to Standa...  
PDF

[View instructions](#)





# LATE WORK

- Please be patient I try my best to get late work graded as soon as possible but it will be the last on my list
- Will be marked with a “M” until it is turned in
- Late work policy- will be accepted for late credit until the quiz is taken; afterwards not accepted.

# GRADES

- 80% Assessment
- 20% Homework
- 45% Qtr 1 45% Qtr 2  
10% Final makes up  
Semester Grade

# Standards Overview

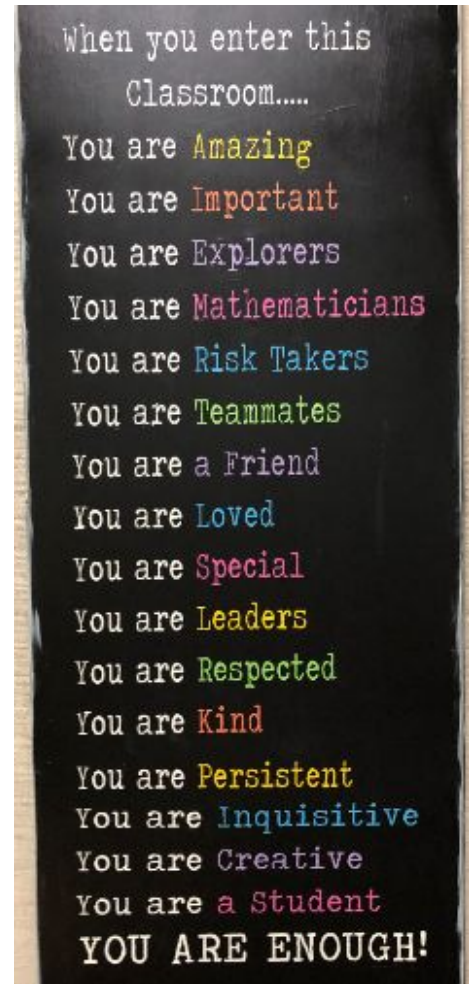
## Pre-Algebra

### 1<sup>st</sup> Semester:

- Two Way Tables
- Real Numbers
- Expressions and Equations
- Square and Square Roots
- Pythagorean Theorem
- Volume
- Transformations

### 2<sup>nd</sup> Semester:

- Rate of Change
- Linear Equations
- Systems of Equations
- Functions
- Exponents
- Scientific Notation
- Probability



# Standards Overview

## Algebra

### 1<sup>st</sup> Semester:

- Expressions/Equations
- Linear Functions
- Inequalities
- Systems of Linear Equations/Inequalities

### 2<sup>nd</sup> Semester:

- Polynomial Expressions and Functions
- Quadratic Functions
- Exponential Functions
- Statistics

When you enter this  
Classroom.....

You are Amazing

You are Important

You are Explorers

You are Mathematicians

You are Risk Takers

You are Teammates

You are a Friend

You are Loved

You are Special

You are Leaders

You are Respected

You are Kind

You are Persistent

You are Inquisitive

You are Creative

You are a Student

YOU ARE ENOUGH!

# MATH NORMS

- Homework given Monday thru Friday.
- Students **MUST** have their assigned calculators & whiteboard markers
- **Typical Day:**
  - Agenda/Warm-up and HW answer ?s
  - Lesson/Activity-Differentiated Instruction
  - Time to start Homework Exit Ticket
- Productive struggle will happen 😊 PLEASE Don't rescue
- Mistakes afford opportunities to examine errors in reasoning.  
“Failure is the opportunity to begin again more intelligently.” Henry Ford



# MATH NORMS

- QUIZ Corrections are an expectation whenever mistakes occur.

We MUST Reflect on our work!

- If absent for an assessment, students will need to take the assessment before school or Wednesday Lunch – NOT during class
- ALL ASSIGNMENTS are in Google Classroom
- PLEASE Check Infinite Campus on a regular basis



# Remind Codes

I will use Remind to communicate with you.

**Be sure to sign up on the Remind App with the following codes:**

**1<sup>st</sup> Hour PreAlgebra** send a message to 81010 text @stanleyh1

**2<sup>nd</sup> Hour Algebra** send a message to 81010 text @ stanleyh2

**3<sup>rd</sup> Hour Algebra** send a message to 81010 text @ stanleyh3

**5<sup>th</sup> Hour PreAlgebra** send a message to 81010 text @ stanleyh5

**QUESTIONS?**

*thanks for coming!*